

# SL1 Tungsten Halogen Light Sources for VIS - NIR

SL1



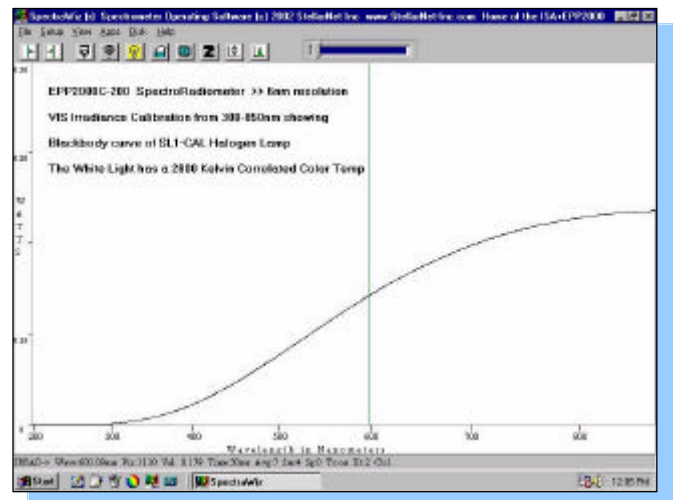
SL1-CUV



SL1-FILTER

- **350 nm-2200nm Spectral Range-** effective for color, reflectance, transmittance, and absorbance measurements
- **Extensive Life-** The SL1 has a 10,000 hour Tungsten Halogen lamp filled with Krypton gas
- **Great Compatibility/Versatility-** manipulate output with color-enhancing or signal-attenuating filters.
- **Small Footprint-** measures only 1.5" x 3" x 3.5"
- **Maximum Flexibility-** several models and options to choose from to meet all your application needs.

- The **SL1-CUV** adds a 1cm cuvette holder with integrated collimating lens. Dual purpose allows the collimating lens to be demounted for far field emission monitoring.
- The **SL1-FILTER** includes a 0.5" diameter filter holder nose cone. Customers can use a variety of filters for spectral attenuation, band pass, and more. Includes filter to improve blue sensitivity.
- **SL1-BAT** is a unique option that adds a jack to any SL1 so it can be powered from +5VDC. Users can achieve complete portability with the BP1 or BP2 battery pack for the spectrometer *and* the SL1-BAT.
- **SL1-CAL** is configured specifically for Irradiance calibrations (300-1100nm). A CD is supplied with intensity data used to calibrate a SpectroRadiometer.



SL1 Tungsten Halogen Black Body Spectrum

## SL1 Light Sources and Accessories

Item	Description	
SL1	SL1 Tungsten-Halogen light source	
SL1-Filter	SL1 light source with filter holder nose and filter.	
SL1-CUV	SL1 light source with integrated cuvette holder	
SL1-CAL	SL1 light source with data CD for 300-1100nm	
SL1-BAT	Optional connector allows +5V battery operation	
SL1-BLUE	SL1 with 470nm Blue LED, replacing halogen bulb	

## Specifications

<b>Weight</b>	0.62 pounds (280 g)	<b>Output to bulb</b>	5VDC
<b>Power consumption</b>	12 Watts	<b>Output regulation</b>	0.2%
<b>Spectral range</b>	350 – 2200nm	<b>Internal filter accessory</b>	2" square filter slot
<b>Time to stabilize output</b>	1 min	<b>External filter slot</b>	SL1-Filter only
<b>Power output</b>	200 W/m <sup>2</sup>	<b>Bulb life</b>	10,000+ hours
<b>Optical color temperature</b>	~2800K	<b>Connector</b>	SMA 905



[www.laser2000.com](http://www.laser2000.com)

GER/AT/CH  
Laser 2000 GmbH  
82234 Wessling  
Tel. +49 8153 405-0  
info@laser2000.de  
www.laser2000.de

NORDICS  
Laser 2000 C.V.  
SE-112 51 Stockholm  
Tel: +46 8 555 36 235  
info@laser2000.se  
www.laser2000.se

BeNeLux PHOTONICS  
Laser 2000 C.V.  
3645 ZJ Vinkeveen  
Tel. +31 297 266 191  
info@laser2000.nl  
www.laser2000.nl

FRANCE  
Laser 2000 SAS  
78860 St-N. I. Brétèche  
Tel. +33 1 30 90 00 60  
info@laser2000.fr  
www.laser2000.fr

IBERIA  
Laser 2000 SAS  
50002 Zaragoza  
Cell. +34 650 529 806  
info@laser2000.es  
www.laser2000.es